

DUBAI CREEK HARBOUR

# CREEK WATERS 2

EMAAR



## Dubai Creek Harbour

Dubai Creek Harbour is an ultra-modern, stylish, and pedestrian-friendly neighbourhood that integrates with Dubai's sustainable urban character.

Situated along the historic Dubai Creek, Dubai Creek Harbour consists of 7.4 million sqm of residential space and 500,000 sqm of parks & open spaces with a viable mix of retail, business, recreation, and community facilities, all within walking distance.

# Creek Island

The Island District is a waterfront development that mixes upscale residences with enticing leisure and recreational amenities to create a world-class community. The district's green central park, stunning marina, yacht club, and five-star hotels will all be popular destinations for residents to enjoy the district's breathtaking views and memorable experiences.



Breathtaking  
Sunset Views



5 Min from Creek  
Marina Yacht Club



Licensed Bars  
& Restaurants



5-Star  
Hotels



Dining at  
The Creek Promenade



# A New Standard for the Island Living Experience



Creek Waters 2 establishes a new benchmark for high-rise island living by blending contemporary architecture with inventive landscaping. A serene oasis nestled amidst the bustling urban landscape of Dubai Creek, Creek Waters 2 embodies the essence of upscale urban living, seamlessly integrating the finest elements of premium residential neighbourhoods while offering unparalleled vistas of the surrounding area.

# Utmost Convenience & Connectivity

Creek Waters 2 sits at the centre of a bustling district that, once completed, will offer all the modern conveniences and amenities that you need, including premier schools, lifestyle and entertainment destinations, and easy access to transport routes leading to the rest of Dubai. A fine selection of retail shops, restaurants and cafes can be directly accessed from the amenities podium leading to an even wider range of shopping and leisure experiences at the promenade and beyond.



4 Metro Stations



A Convenient Interchange



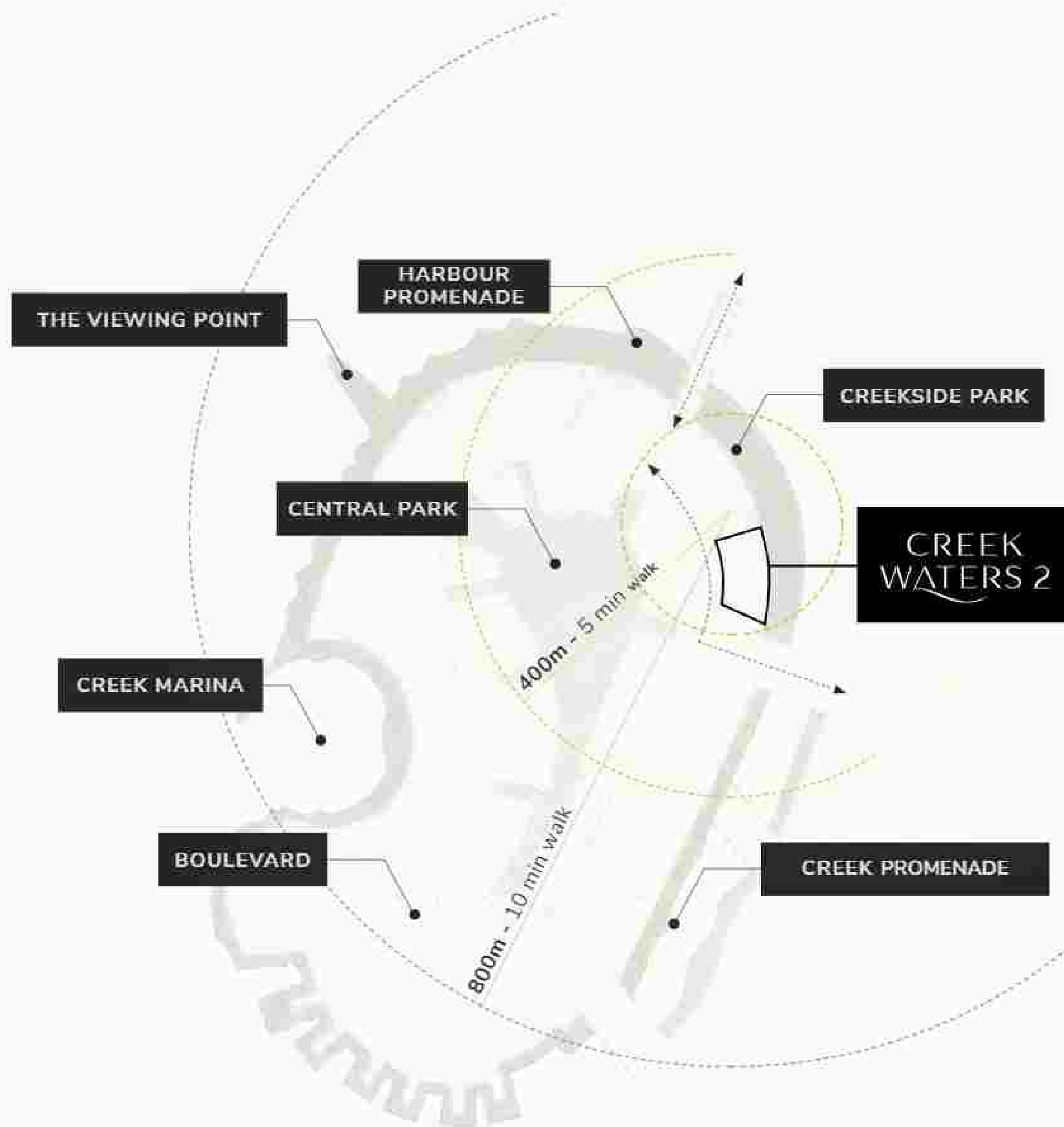
Water Taxis to Downtown Dubai



3 Bridges Connecting to Dubai Creek Harbour



A Panoramic Pedestrian Bridge to the Island





## An Address Like No Other

Creek Waters 2 exudes a glamorous aura and boasts a unique character amidst the towering skyscrapers of varying architectural designs on Creek Island. The stylish residential tower offers a wide range of luxurious apartments, lavish townhouses, a cutting-edge penthouse, and a breathtaking amenities podium. This sanctuary of tranquilly and elegance rises in the heart of Dubai Creek Harbour, offering unmatched vistas of the Creek and the magnificent Dubai Skyline, as well as convenient access to exceptional dining and curated shopping experiences.

# An Influence that Goes Beyond the Mere Visible



The elegant tower draws inspiration from the breathtaking water vistas of Dubai Creek, a significant trading route and the birthplace of Dubai's rich cultural and contemporary heritage. The natural beauty of Creek Waters 2 is not only limited to its breathtaking views, but it also exerts an influence that extends beyond what meets the eye establishing itself as one of the most contemporary and exhilarating new developments in the city.



## A Fine Example of Modern Building Design

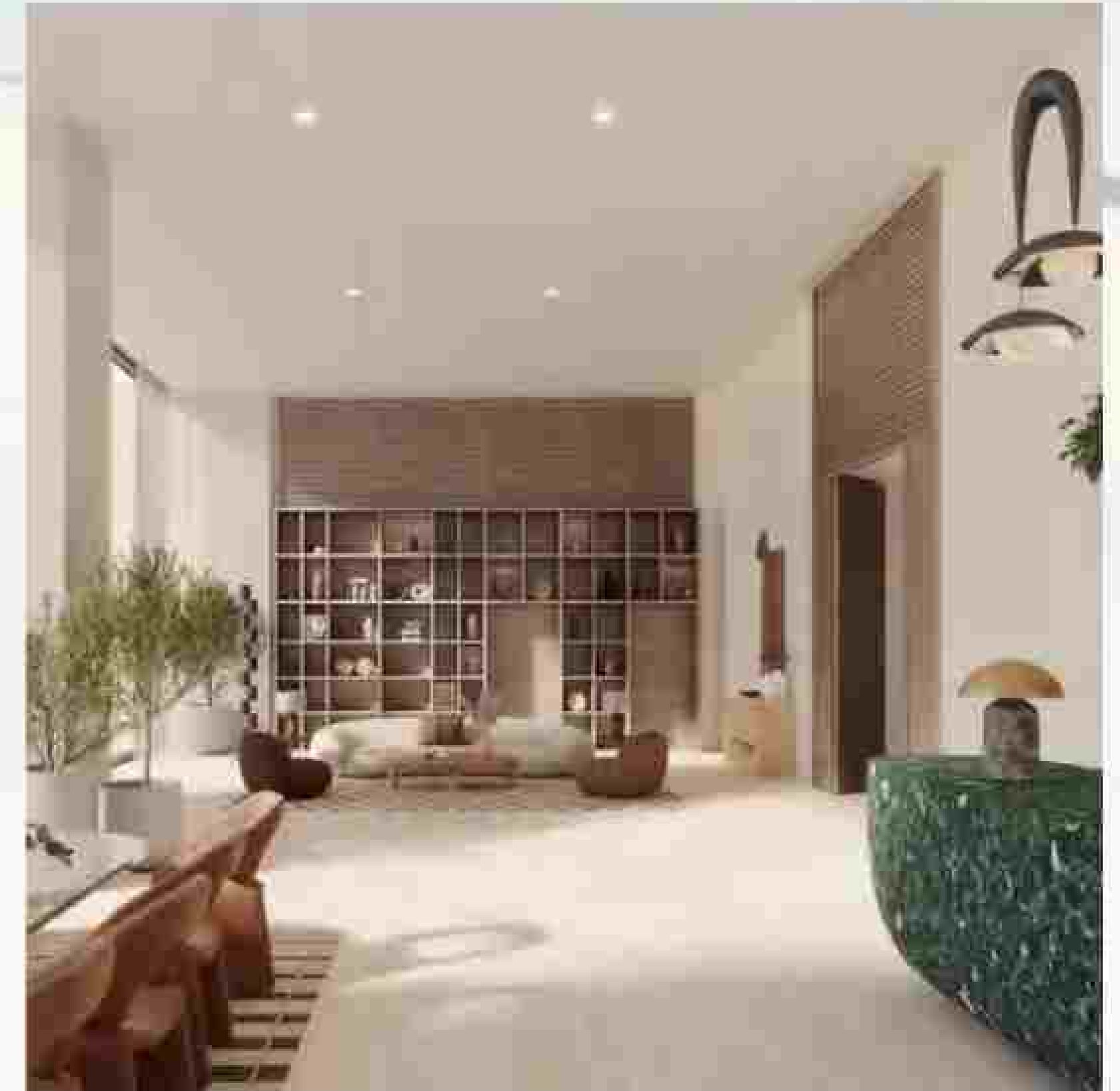
Creek Waters 2 is a splendid architectural marvel that incorporates the principles of urbanist architecture and the most exquisite features of contemporary building design. The lush and natural landscaping of the amenities platform beautifully balances the sleek and structured urban design. The tower's remarkable yet unassuming appearance exudes sophistication and grandeur. At night, a thoughtfully integrated artistic lighting system highlights the building's breathtaking features, confirming its status as a remarkable landmark.



# A Story of Glamour & Unrivalled Scenery

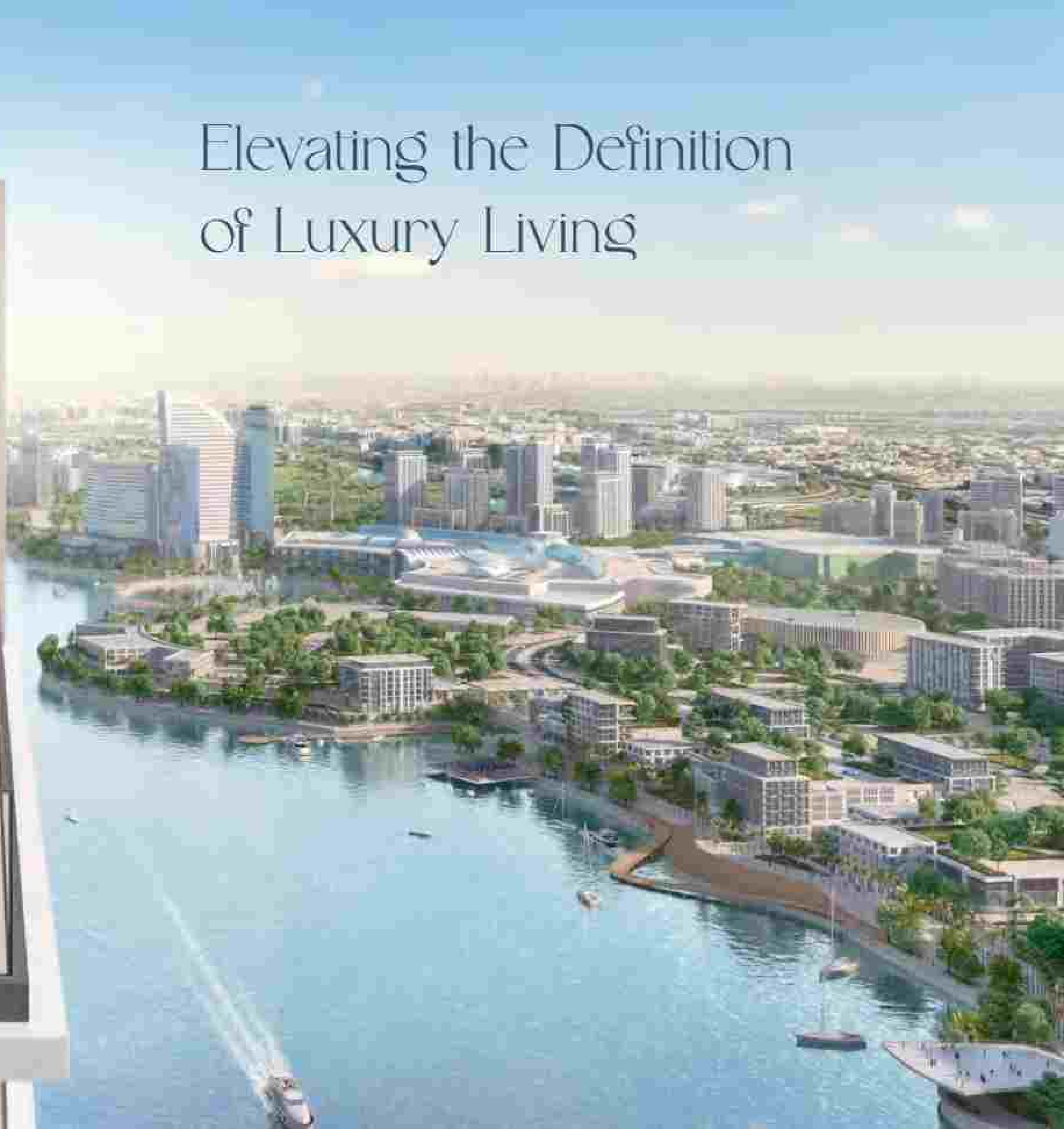
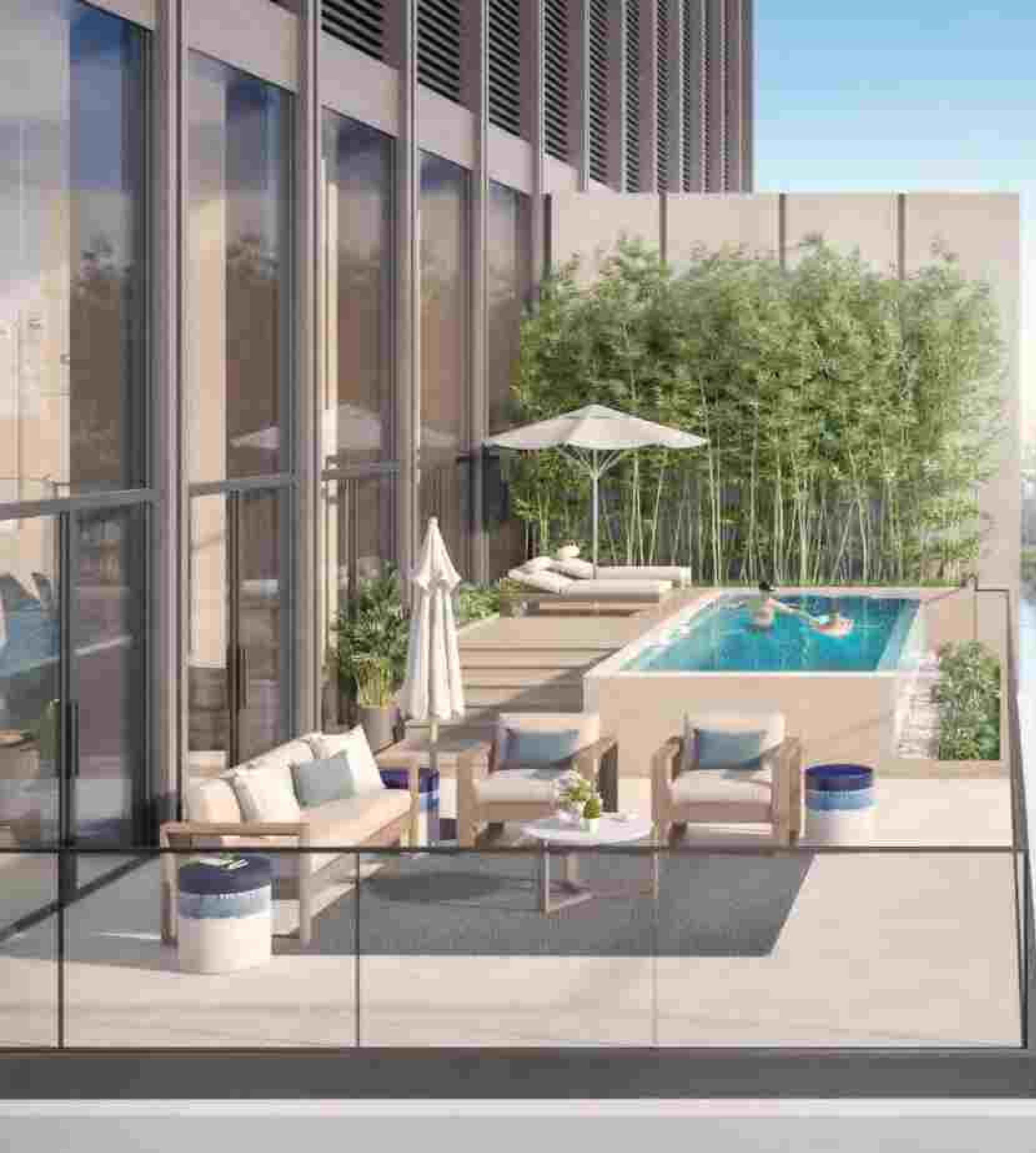


Upon entering Creek Waters 2, a breathtaking water feature serves as a prelude to the luxurious experience that lies ahead as the refined architectural elements gradually come into view, further enhancing the overall elegance of the space.



Entering Creek Waters 2, guests and inhabitants are welcomed by a breathtaking lobby featuring lofty ceilings, ample natural light, and sweeping vistas of the boulevard.

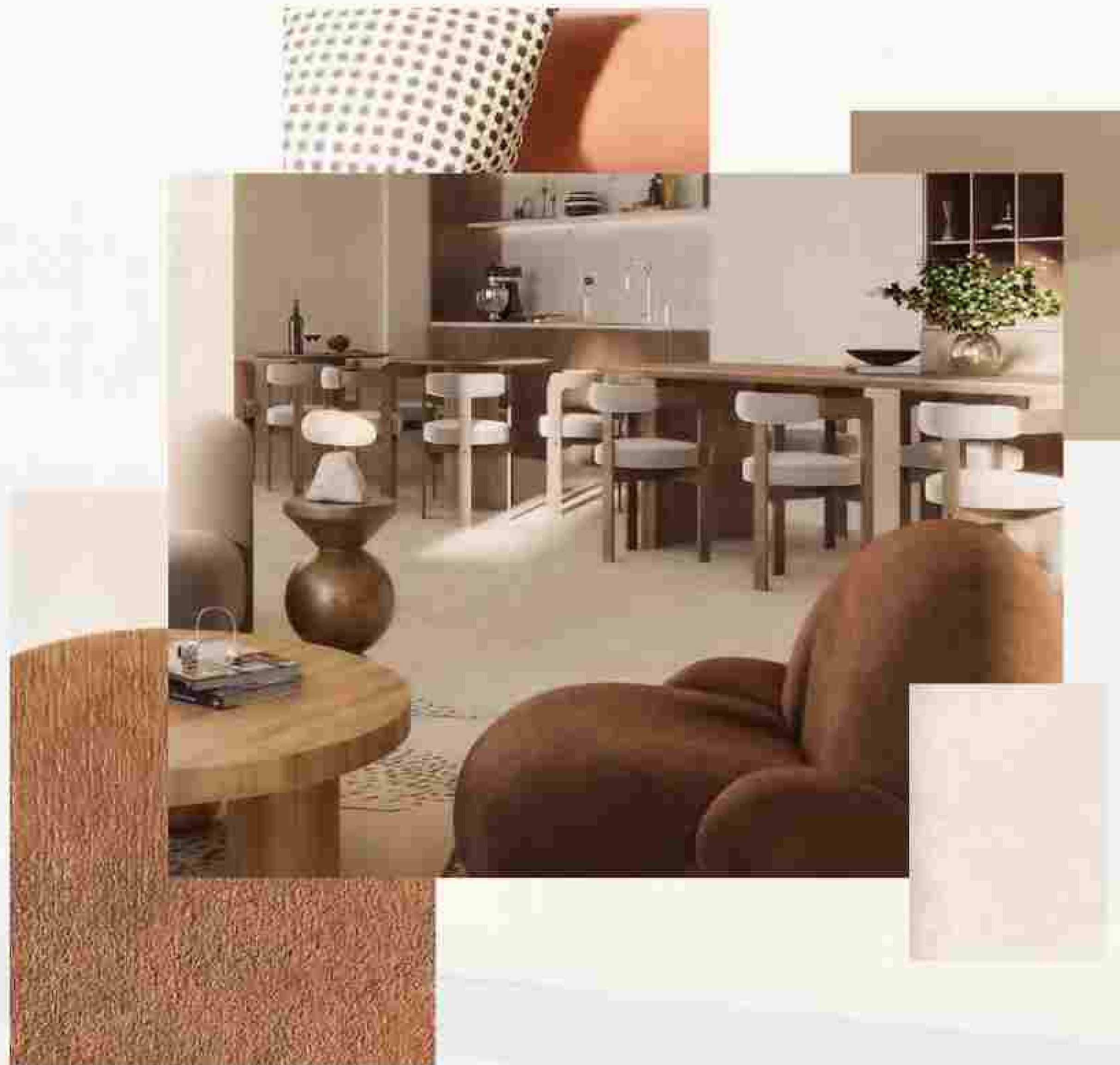
Elevating the Definition  
of Luxury Living



# Space, Light & Meticulous Finishes

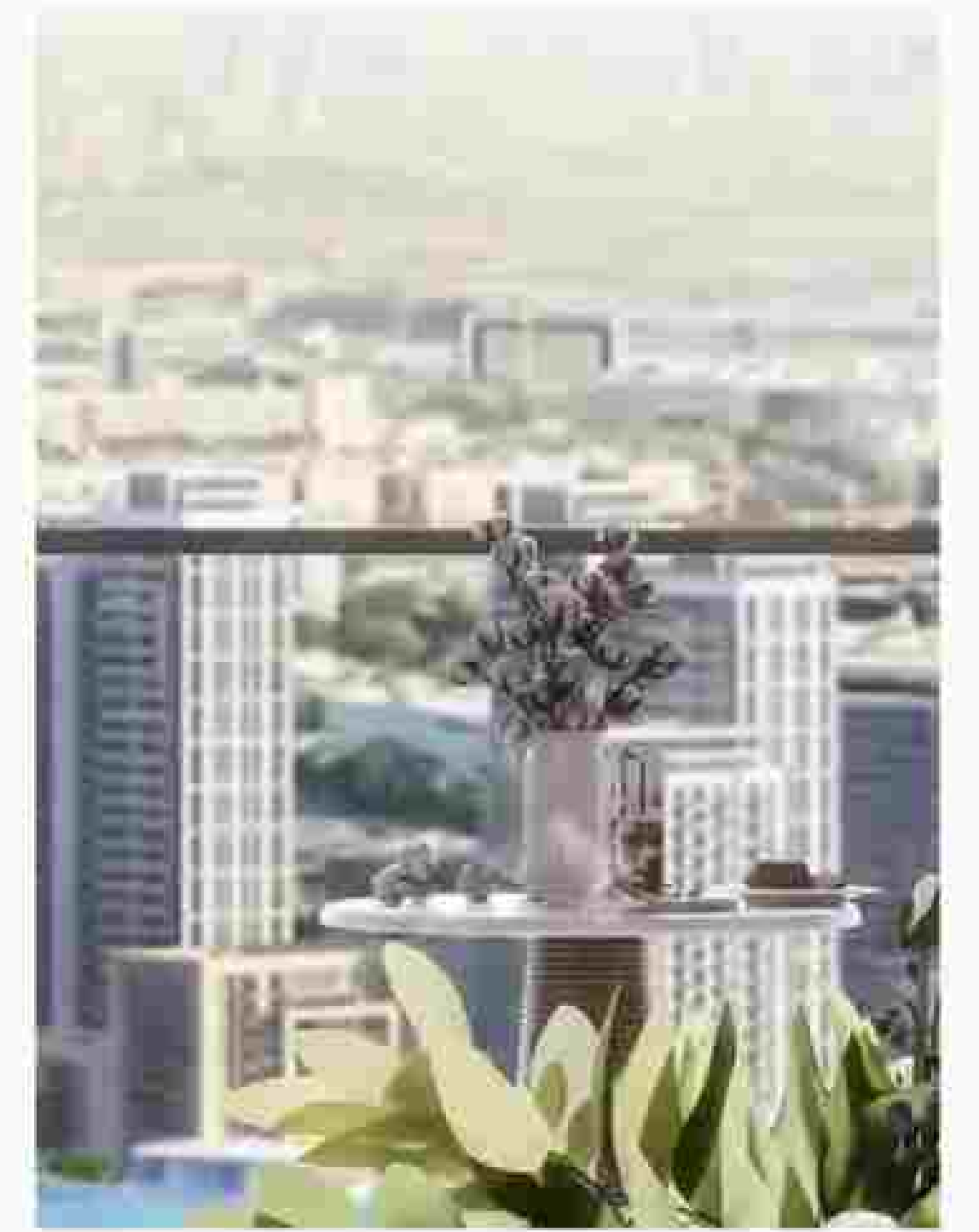
*Creek Waters 2 provides a delightful sensory experience for residents and visitors, with designs and floorplans that maximise space and natural light. Each apartment, ranging from one to four bedrooms, embodies the spirit of exploration while providing a tranquil oasis.*

*Every detail has been carefully considered to provide an unparalleled contemporary urban lifestyle. Every aspect of the living spaces has been meticulously executed, from the design to the crafting of each room, to cater to the modern lifestyle of the most discerning customers.*

















## Unique and Exclusive Penthouse Sophistication

The generous and adaptable space in this exquisite five-bedroom residence is what gives the penthouse at Creek Waters 2 its exceptional value and makes it so unique.

Additionally, the high-end duplex includes a study which can be used as a home office. Situated on the 49th to the 50th floors, every vantage point provides stunning panoramas of the surrounding area.



## Townhouse Opulence with Iconic Views

The exquisite three-bedroom townhouses at Creek Waters 2 have a modern design that exudes sophistication and calm.

But what makes each of them stand out even more, is a beautifully crafted rooftop terrace offering plenty of space for outdoor enjoyment, with breathtaking views of the Creek, the famous Dubai Skyline and Creek Island Promenade, transforming it into a serene outdoor retreat.

Superlative Accessibility  
& Matchless Amenities





## A Sense of Prestige & Exclusivity

The landscaped amenities podium at Creek Waters 2 is meticulously designed to evoke the exclusivity of a private sanctuary, complete with a plethora of amenities, leisure activities, and recreational facilities to enjoy.

# State-of-the-art Park at Your Doorstep

Located directly at their doorstep, residents of Creek Waters 2 can enjoy an active lifestyle at Creekside Park, a pedestrian-friendly linear park boasting a variety of amenities, including playgrounds, fitness centres, sculpture parks, multi-use sports courts, open lawns, and even an amphitheatre. The park has been tastefully manicured, with plenty of trees and plants, as well as shaded paths and a vibrant design that runs in parallel to the promenade's winding route.





## Sparkling Infinity Pool

Residents will also enjoy the sparkling infinity pool blending into the blue of the sky, viewing decks strategically situated to enjoy the best views Dubai Creek Harbour has to offer, a kids' pool with a shaded play area and innovative features.



## Fully-Equipped Gym

The fully-equipped gym, located in a separate pavilion, opening up to an outdoor yoga deck, is a great addition to the overall fitness and recreation experience.

Exploring the More  
Exciting Side of Life





# Creek Marina

With a wide variety of retail, dining, and recreational options, Creek Marina never slows down. Landscaped pedestrian walkways offer stunning views of Downtown Dubai at dusk, while world-class art pieces add another layer to the trendsetting lifestyle.



Food Trucks



Art Installations



Sculptural Viewing Deck



Licensed Vida Creek

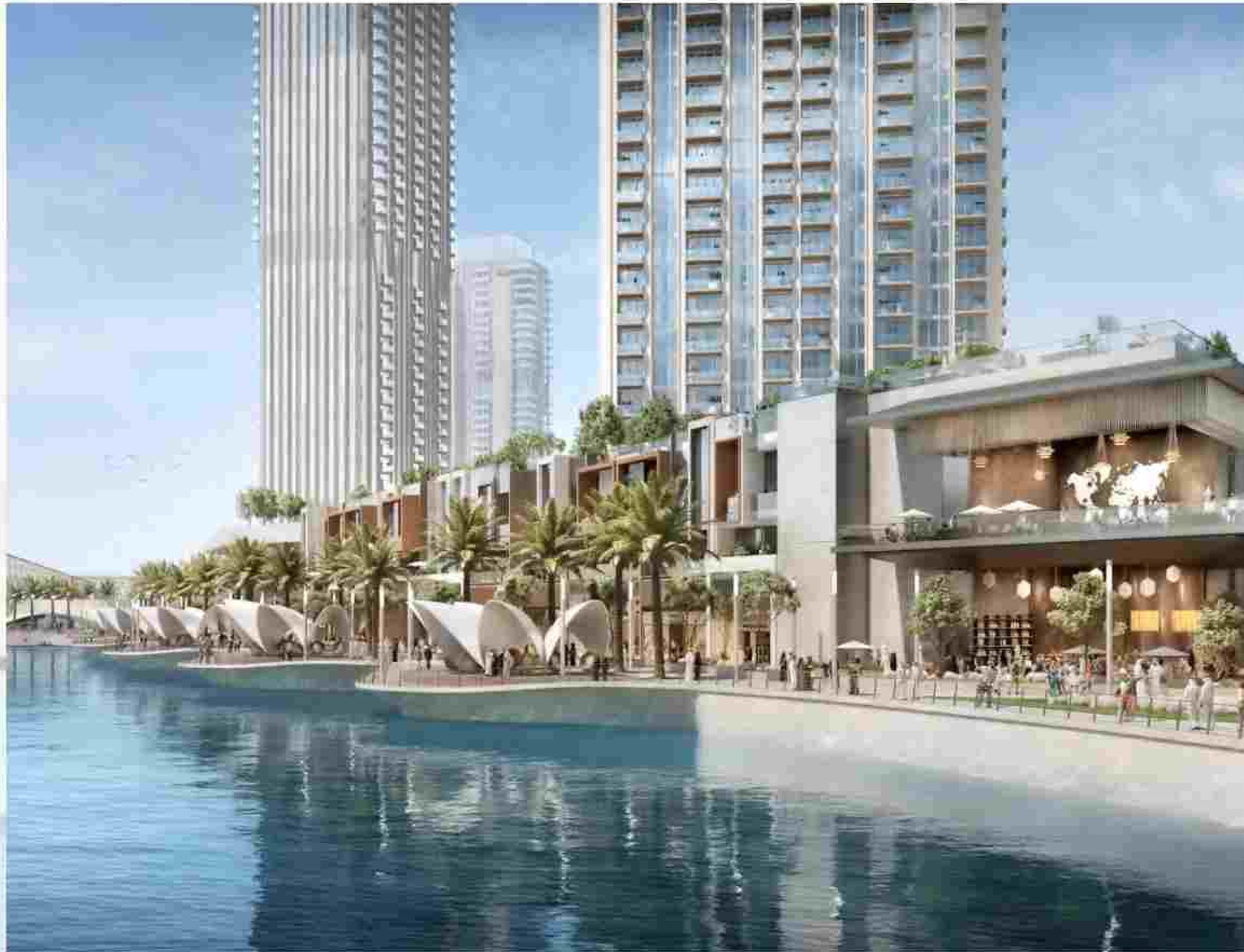


Yacht Club Marina with 81 Berths



Harbour Hotel





## Harbour Promenade

Explore a bustling promenade, and an impressive skyline as you sit back and relax on the Harbour Promenade's observation deck. Set sail across Dubai Creek's glistening waters and take in the city's cityscape from a unique vantage point. Enjoy a wonderful meal while taking in the breathtaking views between shopping and boating.

# Central Park

The heart of island living, Dubai Creek Harbour's Central Park offers residents a tranquil refuge to unwind, first-class amenities to enjoy, and wide-open spaces to discover. With a total area of six football fields, Dubai's Central Park is one of the largest parks in the emirate and offers a variety of activities for the whole family.



Kids' Play Area



Skating Areas



Lawn Amphitheatre



Splash Pad Fitness Plaza



Dog Park





## The Viewing Point

Take in some of the city's most spectacular sights at The Viewing Point at Dubai Creek Harbour. The 11.65m tall and 70-metre long structure spans out over Dubai Creek, with a 26m cantilever projecting out over the water. The walkway offers unobstructed views of the Dubai Creek and surrounding areas, and unique vistas of Downtown Dubai's incredible skyline and back inland towards the stylish Address Grand twin towers.

# World-class Hospitality at Your Fingertips

With Address Grand Creek Harbour and  
Vida Creek Harbour nearby, you can  
unwind in the comfort of fine dining and  
private wellness facilities located mere  
minutes from your residence.

 Wellness

 Fine  
Dining

 Events

 Viewing  
Deck

 Infinity  
Pool

 Fully Equipped  
Gym



A Gateway to  
Premium Living





EMAAR

# Global Lifestyle Developer

As one of the most valuable and reputable real estate developers in the world, Emaar aims to provide world-class design and unrivalled products in the most desirable locations. The Group's portfolio consists of large-scale integrated residential developments, shopping malls, hotels, entertainment, and leisure destinations. Some of Emaar's most iconic landmarks include Burj Khalifa, the world's tallest building.

Market Cap AED	Revenue AED	Net Profit AED
51.8 Bn	24.9 Bn	6.8 Bn
FY 2022	FY 2022	FY 2022
Presence in	Delivered	Under Development
12+	85,000+	27,000+
Global Markets	Residential Units	Residential Units

\*As at 31 December 2022

# CREEK WATERS 2

DUBAI CREEK HARBOUR

For more information please call 800 36227 (UAE) / +971 4 366 1688 (International)  
or talk to our Property Advisor directly at +971 4888 8844 from 9 AM to 7 PM (GST), Monday to Friday.  
Visit our online sales centre at [emaar.com](http://emaar.com) or any of our Sales Centres across the UAE.

## DUBAI

Emaar Sales Centre | Next to Souq Al Bahar, Downtown Dubai

9:30 AM to 10 PM, Sunday - Friday

9:30 AM to 7 PM, Saturday

Dubai Hills Estate Sales Pavilion | Umm Suqeim Road

Dubai Creek Harbour Sales Pavilion | Ras Al Khor

From 9:30 AM to 7 PM, Sunday - Saturday

## ABU DHABI

Emaar Sales Centre | Al Nahda Tower, Ground Floor, 4th Street, Corniche, Al Muroor Road

From 9:30 AM to 7 PM, Sunday - Friday

# EMAAR